



“Serving the Southeast Through Workplace Safety and Health Education”

Course Brochure

January 1, 2011 - December 31, 2011

~USF OTI Education Center’s NEW LOCATION~

**2612 Cypress Ridge Blvd; Suites 101 & 102
Wesley Chapel, FL 33544**



NOW OFFERING LIVE COURSES AT OUR NEW SITE!

Conveniently located right off I-75, just north of Tampa.

~NEW COURSES~

OTI 7120 & 7125 Combustible Dust Hazards

OTI 7210 Pandemic Influenza and Workplace Preparedness

Various 1 hour online courses now available

Hurricane Planning Course

HAZWOPER, Live and Online

Specializing in:

Construction

General Industry

Maritime

Disaster Training

Phone: 1-800-852-5362

Fax: 813-994-1173

www.usfotcenter.org

T a b l e o f C o n t e n t s

Who We Are.....	3
Continuing Education.....	4
Registration Information.....	5
Registration and Book Order Form.....	6
Certificate Program.....	7
Online Courses.....	9
Safety Week Courses.....	12
Course Descriptions and Schedules.....	13
OTI 500.....	13
OTI 501.....	14
OTI 502.....	15
OTI 503.....	15
OTI 510.....	16
OTI 511.....	17
OTI 521.....	18
OTI 2015.....	18
OTI 2045.....	19
OTI 2225.....	20
OTI 2250.....	20
OTI 2264.....	21
OTI 3010.....	21
OTI 3095.....	22
OTI 3110.....	22
OTI 5400.....	23
OTI 5600.....	24
OTI 5602.....	24
OTI 6000.....	25
OTI 7000.....	26
OTI 7100.....	26

Table of Contents

Continued

Course Descriptions and Schedules Continued

OTI 7105.....	27
OTI 7115.....	27
OTI 7120.....	28
OTI 7200.....	28
OTI 7205.....	29
OTI 7210.....	29
OTI 7300.....	30
OTI 7400.....	30
OTI 7405.....	31
OTI 7410.....	31
OTI 7415.....	32
OTI 7500.....	32
OTI 7505.....	33
OTI 7510.....	33
OTI 7845.....	33
USF 9001 Sub Part R-Steel Erection Safety.....	33
Scaffolding Qualified Person.....	34
Fall Protection Qualified Person.....	34
HAZWOPER COURSES.....	35
Additional Training Resources at USF.....	36
Course Calendar by State/City.....	37

Who We Are

The USF OSHA Training Institute Education Center is located off campus just north of Tampa in Wesley Chapel, FL. We work together with the USF Sunshine Education Research Center and the USF Safety Florida Consultation Program to offer employers and employees a wide array of services and courses. The OTI Education Center has formed partnerships and alliances with numerous organizations outside of USF in order to provide top quality classes, workshops and seminars. Our goal is to improve workplace safety and health through education.

The OTI Education Center hosts classes in Alabama, Florida, Georgia, Kentucky, Mississippi, North Carolina, South Carolina, and Tennessee. In addition, the OTI Education Center has provisions in place for hosting contract classes at employer work sites, developing special classes on safety and health related topics, and arranging conferences and seminars on health and safety related topics, as well as disaster and emergency planning. USF OTI Education Center is training over 3,000 workers every year all over the U.S. Join us in keeping our workers safe!

Our New Location



Administrative Offices and Classrooms



Classroom # 1



Classroom # 2

More classroom space to come!

Continuing Education

Accreditation and CEU's

The USF Office of Continuing Professional Development is continually updating its providerships with various organizations. Please check the website for new CEU opportunities.

General CEUs

A continuing education unit (CEU) is defined as 10 contact hours of participation in an organized continuing education experience under responsible sponsorship, capable direction and qualified instruction. CEUs provide a measure of educational achievement, and are widely recognized by employers, industry, professional associations, and certification and licensing agencies as evidence of education progress. Participants who successfully complete programs that qualify for Continuing Education Units will receive CEUs according to this scale.

Florida Construction Industry Licensing Board

The USF Office of Continuing Professional Development is an approved provider of continuing education for the Florida Construction Industry Licensing Board (provider #0003426) for certain USF OSHA Training Institute Education Center courses. Please view individual courses to see whether or not a course has been approved.

American Board of Industrial Hygiene

The American Board of Industrial Hygiene offers "Certification Maintenance" points for specific courses, which have been registered by the University of South Florida Continuing Professional Development Office. Please refer to each course for approval numbers.

Board of Certified Safety Professionals

The Board of Certified Safety Professionals offers "Continuance of Certification" points and is the responsibility of the student to calculate the hours. For every CEU (10 contact hours), one COC is awarded.

Registration Information

Registration:

Online: Secure online registration is available on the website at www.usfotcenter.org
Phone: 800-852-5362

Payment Policy:

Course fees include all necessary classroom materials unless otherwise noted. Checks must be made payable to USF HPCC. Federal ID #16-1765073. Only US Dollars are accepted. Note to Florida State Agencies: Journal transfers are not accepted. (Note: We accept Visa, MasterCard and American Express) A \$20 fee will be charged to any returned checks or declined credit cards. All credit card transactions are processed in US dollars and are subject to the current exchange rates.

Dress: Course management encourages relaxed and comfortable dress throughout the course; however, participants are encouraged to bring a sweater or jacket to the courses as the temperature in meeting rooms often varies. Please check your individual course to see if there are any additional dress requirements.

Confirmation: Upon receipt of your completed registration, you will receive confirmation by email

Course Locations: Courses are held at various locations throughout Florida, Alabama, South Carolina, North Carolina, Mississippi, Tennessee, and Georgia to accommodate the needs of our students. Please go to the website at www.usfotcenter.org for maps and further directions to each course.

On Site Programs: We can customize our courses to meet your specific needs and offer the course at your location. If you are interested please contact Robert Nesbit at 813-974-6789.

Course Hours: unless otherwise noted

8:00 am - 5:00 pm each day

QUESTIONS? Please call 813-994-1195 or email to dray@health.usf.edu

Cancellation Policy:

Cancellation notification must be in writing (fax or email are acceptable) and received (not postmarked) 5 days prior to the start of the course. A cancellation fee equal to 25% will be assessed. Written cancellations received less than 5 working days prior to the event will be charged the cancellation fee plus the per-person cost. No-shows will be billed. Substitutes are welcome without penalty. Please allow up to 2 weeks for any refunds.

The USF Office of Continuing Professional Development reserves the right to cancel this activity due to unforeseen circumstances. In the event of such cancellation, only the registration fee will be returned to the registrant. The USF Office of Continuing Professional Development will not be responsible for travel expenses incurred by the participant in case of cancellation.

Accommodations for Disabilities:

Please notify the University of South Florida Office of Continuing Professional Development, 12901 Bruce B Downs Blvd., MDC 46, Tampa, FL 33612 or call 813-974-7782 a minimum of ten working days in advance of the course if a reasonable accommodation for disability is needed.

Partnerships:

USF OTI Education Center partners with other academic institutions and consulting firms. The academic institutions and consulting firms that have agreed to assist the USF OTI Education Center include:

- ◇ Suncoast Safety Council, Inc. - Clearwater, FL
- ◇ North East Florida Safety Council, Inc. - Jacksonville, FL
- ◇ Sunshine Safety Council, Inc. - Daytona, FL
- ◇ Tampa Area Safety Council, Inc.
- ◇ Safety Council of Palm Beach County, Inc.
- ◇ Florida Safety Council - Orlando, FL
- ◇ Associated Builders and Contractors - Orlando, FL
- ◇ International College - Fort Meyers, FL
- ◇ Safety Guys® - Miami, FL
- ◇ United Safety Council - Orlando, FL

Events, activities, programs and facilities of the University of South Florida are available to all without regard to race, color, marital status, sex, religion, national origin, disability, age, Vietnam or disabled veteran status as provided by law and in accordance with the University's respect for personal dignity.

Registration Form and CFR Regulation Book Order Form

PLEASE PRINT OR TYPE

Name _____ Date of Birth (MM/DD) _____ O Male O Female
Job Title _____
Degree(s) _____
Organization _____
Address _____
City _____ State _____ Zip _____ Country _____
Email _____ Phone _____

Course Registration

Course Number	Course Date(s)	Location	Cost
_____	_____	_____	_____
			Total Fees _____

CFR Regulation Book Order Form (write in quantity desired; shipping is included)

29 CFR 1926 Construction	29 CFR 1910 General Industry	29 CFR 1915, 1917, 1918 Maritime
1-5 \$32.00 ea _____	1-5 \$34.00 ea _____	1-5 \$60.00 ea _____
5-10 \$30.00 ea _____	5-10 \$32.00 ea _____	5-10 \$58.00 ea _____
11-15 \$28.00 ea _____	11-15 \$30.00 ea _____	11-15 \$55.00 ea _____
16-20 \$27.00 ea _____	16-20 \$29.00 ea _____	16-20 \$52.00 ea _____
Over 20 \$25.00 ea _____	Over 20 \$27.00 ea _____	Over 20 \$50.00 ea _____

Spanish Materials 29 CFR 1926 Spanish \$45.00 each _____ 10 hr Construction Spanish CD \$45.00 _____
Complete OSHA Regulation on Fall Protection \$35.00 each _____

RN 2011 165/1172 **Total Fees** _____

Payment Information

Check (see instructions below) Visa MasterCard American Express

Credit Card # _____ Exp Date _____
Print Cardholder Name _____ Signature _____

Make check/money order payable to **USF HPCC** (USF Health Professions Conferencing Corporation)
Federal ID # 16-1765073

Mail to: USF HPCC
Office of Continuing Professional Development
12901 Bruce B Downs Blvd., MDC 46
Tampa, FL 33612

FAX: FAX to 813-974-3217

Cancellation Policy: Cancellation notification must be in writing (fax or email are acceptable) and received (not postmarked) 5 days prior to the start of the course. A cancellation fee equal to 25% will be assessed. Written cancellations received less than 5 working days prior to the event will be charged the cancellation fee plus the per-person cost. No-shows will be billed. Substitutes are welcome without penalty. Please allow up to 2 weeks for any refunds.

The USF Office of Continuing Professional Development reserves the right to cancel this activity due to unforeseen circumstances. In the event of such cancellation, only the registration fee will be returned to the registrant. The USF Office of Continuing Professional Development will not be responsible for travel expenses incurred by the participant in case of cancellation.

NEW

“Serving the Southeast Through Workplace
Safety and Health Education”

Professional Certificate in General Industry

Required Courses: 4 courses*

- ◆ OTI 511 Standards for the General Industry **OR**
OTI 501 Trainer Course for General Industry* **OR**
** You must meet OTI 501 prerequisites to take this course*
- ◆ OTI 503 Update for Construction Industry Outreach Trainers **OR**
OTI 6000 Collateral Duty for Federal Agencies

- ◆ OTI 521 Guide to Industrial Hygiene
- ◆ OTI 2045 Machinery and Machine Guarding Standards
- ◆ OTI 7500 Introduction to Safety and Health Management Systems

Electives—must choose 5*

- ◆ OTI 2015 Hazardous Materials
- ◆ OTI 2225 Respiratory Protection
- ◆ OTI 2264 Permit Required Confined Space Entry

- ◆ OTI 3095 Electrical Standards
- ◆ OTI 3010 Trenching, Excavation and Soil Mechanics
- ◆ OTI 3110 Fall Arrest Systems
- ◆ OTI 7000 OSHA Ergo Guidelines for Nursing Homes
- ◆ OTI 7100 Introduction to Machinery and Machine Guarding
- ◆ OTI 7105 Evacuation and Emergency Planning
- ◆ OTI 7115 Lockout/Tagout
- ◆ OTI 7200 Bloodborne Pathogens for Healthcare Facilities
- ◆ OTI 7205 Health Hazard Awareness
- ◆ OTI 7300 8 Hour Permit Confined Space Standards
- ◆ OTI 7505 Introduction to Accident Investigation
- ◆ OTI 7510 Introduction to OSHA for Small Business
- ◆ OTI 7845 Recordkeeping Rules

Professional Certificate in Construction

Required Courses: 4 courses*

- ◆ OTI 510 Standards for the Construction Industry **OR**
OTI 500 Trainer Course for the Construction Industry* **OR**
** You must meet OTI 500 prerequisites to take this course*
- ◆ OTI 502 Update for Construction Industry Outreach Trainers

- ◆ OTI 521 Guide to Industrial Hygiene
- ◆ OTI 3010 Trenching, Excavation and Soil Mechanics
- ◆ OTI 3110 Fall Arrest Systems

Electives—must choose 5*

- ◆ OTI 2264 Permit Required Confined Space Entry
- ◆ OTI 3095 Electrical Standards
- ◆ OTI 7105 Evacuation and Emergency Planning

- ◆ OTI 7205 Health Hazard Awareness
- ◆ OTI 7300 8 Hour Permit Confined Space Standards
- ◆ OTI 7400 Trainer Course in Construction Noise
- ◆ OTI 7405 Fall Hazard Awareness for the Construction Industry
- ◆ OTI 7410 Managing Excavation Hazards
- ◆ OTI 7415 OSHA Construction Industry Requirements: Awareness of Major Hazards and Prevention Strategies
- ◆ OTI 7500 Introduction to Safety and Health Management Systems
- ◆ OTI 7505 Introduction to Accident Investigation
- ◆ OTI 7510 Introduction to OSHA for Small Business
- ◆ OTI 7845 Recordkeeping Rules

Professional Certificate in Maritime

Required Courses: 4 courses*

- ◆ OTI 5400 Trainer Course for the Maritime Industry
** You must meet OTI 5400 prerequisites to take this course*
- ◆ OTI 2225 Respiratory Protection
- ◆ OTI 2264 Permit Required Confined Space Entry
- ◆ OTI 7500 Introduction to Safety and Health Management Systems

Electives—must choose 5*

- ◆ OTI 7105 Evacuation and Emergency Planning
- ◆ OTI 7205 Health Hazard Awareness
- ◆ OTI 3095 Electrical Standards
- ◆ OTI 7505 Introduction to Accident Investigation
- ◆ OTI 7845 Recordkeeping Rules
- ◆ OTI 2015 Hazardous Materials
- ◆ OTI 2045 Machinery and Machine Guarding Standards
- ◆ OTI 521 Guide to Industrial Hygiene
- ◆ OTI 7510 Introduction to OSHA for Small Business

Check website for updates and application:

Events, activities, programs and facilities of the University of South Florida are available to all without regard to race, color, marital status, sex, religion, national origin, disability, age, Vietnam or disabled veteran status as provided by law and in accordance with the University's respect for personal dignity.

*Note: Certificate Program courses are subject to change without notice.

USF OSHA Certificate Programs

Frequently Asked Questions

Regardless of your educational background, the USF Certificate Programs provide both experienced and newer safety professionals important workplace knowledge and practical experience regarding safety and safety standards. Participants will enjoy a fulfilling learning experience and gain the skills necessary to create solutions for workplace safety challenges.

Is there a set schedule of courses for certificate programs?

No. Any course listed on the USF OTI Education Center website or course brochure is applied towards the certificate.

I already have a bachelor's degree and I am employed. Would a certificate program benefit me?

Yes. Certificate programs offer concentrated study in areas directly applicable to many jobs and can add depth to existing knowledge and skills. Completion of a certificate program can help you make the transition to a new career.

How will I benefit from this certificate?

You will become aware of government agencies that affect your industry. You will learn to communicate safety and health problems to your team in order to reduce injuries and health problems in your workplace. We will help you get started on developing an effective safety program.

What is the cost of the courses for the certificate?

There is a \$50 non-refundable fee to enroll in the certificate program. For individual course fees, see the details on our website at www.usfotcenter.org. You will receive a 20% discount on each course that is applied to the certificate program. Each course is paid for at the time of enrollment.

Can I take courses without being enrolled in the certificate program?

Yes. The certificate program consists of courses from our regular curriculum, so some students work toward a certificate while others do not. From the date of your application for the certificate program, you have five years to complete the required coursework.

Can I pursue both Construction and General Industry areas of specialization in the certificate program?

Yes as long as requirements for both certificates are met.

In what order should I take the courses after finishing the fundamental OSHA courses?

There is no required order to the coursework. Once you have completed the prerequisite courses listed previously you can take any course in your area of interest.

If I have already taken course does it apply?

If you have already taken a listed course with the University of South Florida OTI Education Center that course can be applied to a certificate. There will not be a refund of the discounted price.

Do I have to take all courses through University of South Florida OTI Education Center?

You may transfer up to 4 courses from any other OTI Education Center.

How long do I have to complete the certificate?

From the date of your application for the certificate program, you have five years to complete the required coursework.

Do I get college credit for any of these courses?

The University of South Florida does not yet offer university credit for these courses. However, several colleges nationwide do apply some of these courses towards an undergraduate degree. Check with individual colleges or universities.

ONLINE COURSES

- ◇ OTI 510 Occupational Safety and Health Standards for Construction Industry (prerequisite for the OTI 500 course)
- ◇ OTI 511 Occupational Safety and Health Standards for General Industry (prerequisite for the OTI 501 course)
- ◇ 10 hour OSHA Safety Course for both General Industry and Construction
- ◇ 30 hour OSHA Safety Course for both General Industry and Construction
- ◇ 24 Hour HAZWOPER
- ◇ 8 Hour HAZWOPER
- ◇ 4 Hour Recordkeeping
- ◇ Fleet Driver Program
- ◇ Safe Teen Jobs Awareness Training

Specialty 1 Hour Online Courses

- ◇ Fall Protection
- ◇ Bloodborne Pathogens
- ◇ Scaffold
- ◇ Stairways and Ladders
- ◇ Introduction to OSHA
- ◇ OSHA Standards and Inspection Procedures
- ◇ Personal Protective Equipment
- ◇ Recordkeeping
- ◇ Safety Programs
- ◇ Rigging and Material Handling

Check website for more courses as they are frequently added.....

**Do you or your employees need to complete OSHA training?
Why not save time and the expense of travel to and from a training
center by taking your class online?**



Register for your course at
www.usfotcenter.org

Complete our course 100% online.

Set your own schedule 24/7



**YOUR ONLINE OSHA TRAINING IS CONVENIENT,
EASY AND INFORMATIVE.**

Aggression Control Manager Online Course

Workplace violence is the **number one threat facing American corporations today** according to a Pinkerton Security survey. And it's no wonder, considering the hostilities and injuries it can cause, not to mention the lawsuits and other associated costs that tax employers for more than **\$4.2 billion a year**.

Yet very few people know and understand the steps necessary to help prevent violent incidents in their early stages. In order to prevent such violence, measuring and thereby managing aggression prior to conflict is key.

By taking and completing this Certified Aggression Control Manager Course you'll learn the steps necessary to recognize and prevent such violence by **being prepared**, knowing how to **persuade the aggressor** and knowing how to **create a safe escape**.

You can really have control over how aggression affects your work environment.

IS THIS COURSE RIGHT FOR YOU?

THE USF AGGRESSION CONTROL MANAGER COURSE IS GREAT FOR:

Teachers:

- Defuse Aggressive Behavior in Students Before it Can Escalate into Conflict
- Recognize and Manage Potential Triggers that Take Place in the Classroom
- Recognize and Understand Students with Primal or Cognitive Aggressive Tendencies

Managers:

- Avoid Employee Conflicts
- Help Maintain a Productive Work Environment with Many Different Personality Types
- Learn How to Interact with Potentially Aggressive Em-

Anyone Responsible for Others:

- Distinguish Between Cognitive and Primal Aggressors and Predict Their Actions
- Learn How to Not Just Resolve Conflict, but Prevent it

TAKING THE COURSE ONLINE

By Taking This Aggression Control Class Online, You'll be Able to:

- Work anytime, anywhere - All you need is a computer and access to the Internet
- Log on and off as often as you like to work at your own pace
- Access the course anytime you wish 24/7
- Register for the course one lesson at a time or all at once
- ◆ Receive a Continuing Education credit upon successful completion of the entire course

**FOR REGISTRATION AND FEE INFORMATION PLEASE VISIT OUR WEBSITE AT
WWW.USFOTICENTER.ORG**

General Industry and Construction

The OSHA Training Institute Education Center at the University of South Florida is pleased to offer both the 10 hour and 30 hour OSHA Construction and General Industry Safety Training courses. Training can be scheduled for weekdays and/or week-ends. Location for training can be held at your Company facility or at our training facility. Completion of any of these courses will provide an official US Department of Labor card. (minimum number of students apply)

10 hour Construction or General Industry - \$125.00 per student

30 hour Construction or General Industry - \$300.00 per student

Topics Include:

General Industry

- ◇ Introduction to OSHA
- ◇ Electrical
- ◇ Walking and Working Surfaces
- ◇ Flammable and Combustible Liquids
- ◇ Personal Protective Equipment
- ◇ Machine Guarding
- ◇ Hazard Communication
- ◇ Bloodborne Pathogens
- ◇ Safety and Health Programs
- ◇ Fire Protection

And additional topics included in the 30 hour course

Construction

- ◇ Introduction to OSHA
- ◇ Electrical
- ◇ Personal Protective Equipment
- ◇ Fall Protection
- ◇ Caught by/Stuck Between
- ◇ Cranes
- ◇ Excavations
- ◇ Material Handling
- ◇ Scaffolds
- ◇ Stairways and Ladders
- ◇ Tools

And additional topics included in the 30 hour course

SAFETY WEEKS

To earn your Certificate Program faster attend a Safety Week.

INTRODUCTION TO OSHA SAFETY WEEK

FEBRUARY 7-11, 2011 WESLEY CHAPEL, FL \$600.00

February 07, 2011	OTI 7510 Introduction to OSHA for Small Business 8:00 am - 12:00 pm
February 07, 2011	OTI 7845 Recordkeeping - 1:00 pm - 5:00 pm
February 08, 2011	OTI 7000 OSHA's Ergonomics Guidelines Training for Nursing Homes
February 09, 2011	OTI 7200 Bloodborne Pathogens
February 10, 2011	OTI 7205 Health Hazard Awareness
February 11, 2011	OTI 7500 Introduction to Safety and Health Management

CONSTRUCTION SAFETY WEEK

MARCH 22-26, 2011 ORLANDO, FL \$450.00

March 22, 2011	OTI 7400 Trainer Course in Construction Noise
March 23-24, 2011	OTI 7415 OSHA Construction Industry Requirements: Awareness of Major Hazards and Prevention Strategies
March 25-26, 2011	OTI 7505 Introduction to Accident Investigation

INTRODUCTION TO OSHA SAFETY WEEK

APRIL 18-22, 2011 ORLANDO, FL \$550.00

April 18-19, 2011	OTI 7505 Introduction to Accident Investigation
April 20, 2011	OTI 7205 Health Hazard Awareness
April 21, 2011	OTI 7300 8 Hour Permit Required Confined Space
April 22, 2011	OTI 7500 Introduction to Safety and Health Management

GENERAL INDUSTRY SAFETY WEEK

MAY 23-27, 2011 COCONUT GROVE, FL \$450.00

May 23-24, 2011	OTI 7505 Introduction to Accident Investigation
May 25, 2011	OTI 7205 Health Hazard Awareness
May 26, 2011	OTI 7300 8 Hour Permit Required Confined Space
May 27, 2011	OTI 7500 Introduction to Safety and Health Management

CONSTRUCTION SAFETY WEEK

JUNE 13-17, 2011 FORT LAUDERDALE, FL \$550.00

June 13-14, 2011	OTI 7415 OSHA Construction Industry Requirements: Awareness of Major Hazards and Prevention Strategies
June 15, 2011	OTI 7400 Trainer Course in Construction Noise
June 16, 2011	OTI 7500 Introduction to Safety and Health Management
June 17, 2011	OTI 7105 Evacuation and Emergency Planning 8:00 am - 12:00 pm

CONSTRUCTION SAFETY WEEK

AUGUST 29-SEPT 2, 2011 TAMPA, FL \$600.00

August 29, 2011	OTI 7510 Introduction to OSHA for Small Business 8:00 am - 12:00 pm
August 29, 2011	OTI 7845 Recordkeeping 1:00 pm - 5:00 pm
August 30, 2011	OTI 7205 Health Hazard Awareness
August 31, 2011	OTI 7300 8 Hour Permit Required Confined Space
September 01, 2011	OTI 7405 Fall Hazard Awareness for the Construction Industry
September 02, 2011	OTI 7410 Managing Excavation Hazards

INTRODUCTION TO OSHA SAFETY WEEK SEPT 26-30, 2011 DAYTONA BEACH, FL \$600.00

Sept 26, 2011	OTI 7510 Introduction to OSHA for Small Business 8:00 am - 12:00 pm
Sept 26, 2011	OTI 7845 Recordkeeping 1:00 pm - 5:00 pm
Sept 27, 2011	OTI 7500 Introduction to Safety and Health Management
Sept 28-29, 2011	OTI 7505 Introduction to Accident Investigation
Sept 30, 2010	OTI 7105 Evacuation and Emergency Planning 8:00 am - 12:00 pm

GENERAL INDUSTRY SAFETY WEEK

OCTOBER 11-14, 2011 ORLANDO, FL \$450.00

October 11, 2011	OTI 7200 Bloodborne Pathogens
October 12, 2011	OTI 7500 Introduction to Safety and Health Management
October 13, 2011	OTI 7510 Introduction to OSHA for Small Business 8:00 - 12:00 pm
October 14, 2011	OTI 7100 Machine and Machine Guarding 8:00 am - 12:00 pm

CONSTRUCTION SAFETY WEEK

DEC 12-16, 2011 JACKSONVILLE, FL \$600.00

December 12, 2011	OTI 7405 Fall Hazard Awareness for the Construction Industry
December 13, 2011	OTI 7300 8 Hour Permit Required Confined Space
December 14, 2011	OTI 7205 Health Hazard Awareness
December 15-16, 2011	OTI 7505 Introduction to Accident Investigation

500 - Trainer Course in Occupational Safety and Health Standards for the Construction Industry

General CEUs: 2.5

Course Fee: \$800.00

CILB: 31 contact hours including 1 hour of workplace safety (Approval 0008922)

Additional \$50.00

ABIH: 4.0 Safety CM Points

Course Schedule

Begin Date	End Date	City
Jan 10	Jan 13	Jacksonville, FL
Jan 31	Feb 03	Orlando, FL
Feb 14	Feb 17	Tampa, FL
Mar 07	Mar 10	Clearwater, FL
Apr 04	Apr 07	Miami FL
Apr 18	Apr 21	Tampa, FL
May 16	May 19	Fort Lauderdale, FL
Jun 06	Jun 09	Orlando, FL
Jun 20	Jun 23	Miami, FL
Jul 18	Jul 21	Wesley Chapel, FL

Begin Date	End Date	City
Aug 01	Aug 04	Columbia, SC
Aug 08	Aug 11	Miami, FL
Aug 15	Aug 19	Jacksonville, FL
Sep 06	Sep 09	Wesley Chapel, FL
Sep 19	Sep 22	Orlando, FL
Oct 03	Oct 06	Daytona Beach, FL
Oct 17	Oct 20	Tampa, FL
Oct 31	Nov 03	Fort Lauderdale, FL
Nov 29	Dec 02	Miami, FL
Dec 05	Dec 08	Orlando, FL

This course is designed for persons in the private sector interested in developing safety and health programs in the construction industry. Special emphasis will be placed on those areas in construction that are the most hazardous, using OSHA standards as a guide. Course participants will also be taught effective training techniques. Participants who successfully complete the course and pass a multiple choice test will become outreach trainers, authorized to conduct both 10 and 30 hour construction courses. OSHA's 29 CFR 1926 Construction Industry Standard will be provided.

Prerequisites: Five years relevant experience in the construction safety and health field and attendance in a week long construction safety and health course (OTI 510). Prerequisite form is available online and needs to be completed before the course is begun.

Testing Policy: Authorized Trainers must possess both an active Trainer Card and certificate of course completion. To obtain these two credentials, the student trainer must pass (80%) both the performance test and the knowledge test in the #500 course. Students that do not pass the test the first time will be given one opportunity for a retest. The retest result is final. A Letter of Attendance will be issued to students that do not meet the criteria to become an Authorized Trainer.

Course Objectives: Upon completion of the course, participants will be able to:

- ◇ Define Construction terms found in the OSHA standards;
- ◇ Present effective safety and health training programs in accordance with OSHA's construction standards, regulations and guidelines;
- ◇ Identify hazards that occur in the construction industry and determine appropriate standards;
- ◇ Prepare reports citing the conditions found; and
- ◇ Identify methods to correct hazards.

Course Topics:

- | | | |
|--|--------------------------------|----------------------------------|
| ◇ Introduction to OSHA Standards | ◇ Walking and working surfaces | ◇ Welding |
| ◇ Safety programs | ◇ Scaffolding | ◇ Confined space entry |
| ◇ OSHA inspections, targeting, and penalties | ◇ Trenching | ◇ Health hazards in construction |
| ◇ Training techniques | ◇ Electrical | ◇ Personal protective equipment |
| ◇ Hazard communication | ◇ Cranes and rigging | ◇ Concrete construction |
| ◇ Health hazards in construction | ◇ Ladders and stairways | ◇ Steel erection |
| | ◇ Tools | |

501 - Trainer Course in Occupational Safety and Health Standards for the General Industry

General CEUs: 2.5

Course Fee: \$800.00

ABIH: 4.0 Safety CM Points

Course Schedule

Begin Date	End Date	City
Jan 24	Jan 27	Tampa, FL
Jan 31	Feb 03	Coconut Grove, FL
Feb 22	Feb 25	Fort Lauderdale, FL
Feb 28	Mar 03	Orlando, FL
Feb 28	Mar 03	Key West, FL
Mar 14	Mar 17	Wesley Chapel, FL
Mar 14	Mar 17	Miami, FL
Apr 11	Apr 14	Nashville, TN
Apr 25	Apr 28	Clearwater, FL
May 09	May 12	West Palm Beach, FL
May 16	May 19	Naples, FL

Begin Date	End Date	City
Jun 20	Jun 21	Wesley Chapel, FL
Jul 18	Jul 21	Miami, FL
Aug 01	Aug 04	Daytona Beach, FL
Aug 15	Aug 18	Wesley Chapel, FL
Sep 12	Sep 15	Orlando, FL
Sep 26	Sep 29	Columbia, SC
Oct 03	Oct 06	Tampa, FL
Oct 11	Oct 14	Miami, FL
Nov 07	Nov 10	Jacksonville, FL
Nov 14	Nov 17	Wesley Chapel, FL
Dec 12	Dec 15	Fort Lauderdale, FL

This course is designed for private sector personnel from a variety of industries to present detailed information on how the provisions of the Occupational Safety and Health (OSH) Act may be implemented in the workplace. Rights and responsibilities under the OSH Act, the appeals process, recordkeeping, and voluntary protection programs are covered. The course also includes an introduction to OSHA's General Industry standards and an overview of the requirements of the more frequently referenced standards. Participants who successfully complete the course and pass a multiple choice test will become outreach trainers, authorized to conduct both 10 and 30 hours General Industry courses. OSHA's 29 CFR 1910 General Industry Standard (1900-1910.999 and 1910.000 to end) will be provided.

Prerequisites: Five years relevant experience in the General Industry safety and health field and attendance in a week long general industry safety and health course (OTI 511). Prerequisite form is available online and needs to be completed before the course is begun.

Testing Policy: Authorized Trainers must possess both an active Trainer Card and certificate of course completion. To obtain these two credentials, the student trainer must pass (80%) both the performance test and the knowledge test in the #501 course. Students that do not pass the test the first time will be given one opportunity for a retest. The retest result is final. A Letter of Attendance will be issued to students that do not meet the criteria to become an Authorized Trainer.

Course Objectives: Upon completion of the course, participants will be able to:

- ◇ Locate OSHA safety and health standards, policies and procedures;
- ◇ Describe the use of OSHA Standards and regulations to supplement an on-going safety and health program;
- ◇ Identify common violations of OSHA standards such as lockout/tagout, walking and working surfaces, hazardous materials and welding; and
- ◇ Pretest and review, post test and review, and overview of the training outreach program
- ◇ Introduction to OSHA standards
- ◇ Overview of the OSH Act and 29 CFR 1903
- ◇ Citations and proposed penalties
- ◇ Training techniques
- ◇ Means of egress and fire protection
- ◇ Personal protection equipment
- ◇ Material handling
- ◇ Electrical safety standards and work practices
- ◇ Hazard communication
- ◇ Introduction to industrial hygiene
- ◇ Machine guarding
- ◇ Lockout/tagout
- ◇ Walking/working surfaces
- ◇ OSHA recordkeeping
- ◇ Ergonomics
- ◇ Welding permit-required confined spaces

502—Update for Construction Industry Outreach Trainer

Course Fee: \$600

General CEUs: 1.7

Course Schedule

Begin Date	End Date	City
Jan 10	Jan 12	Orlando, FL
Jan 24	Jan 26	Naples, FL
Feb 16	Feb 18	Daytona Beach, FL
Mar 29	Mar 31	Tampa, FL
Apr 25	Apr 27	Miami, FL
May 02	May 04	Jacksonville, FL
Jun 07	Jun 09	Orlando, FL
Jul 25	Jul 27	Wesley Chapel, FL
Aug 22	Aug 24	Miami, FL
Sep 26	Sep 28	Orlando, FL
Oct 17	Oct 19	Wesley Chapel, FL
Oct 31	Nov 02	Daytona Beach, FL
Nov 07	Nov 09	Fort Myers, FL
Dec 12	Dec 14	Orlando, FL

This course is designed for personnel in the private sector who have completed the OTI 500 instructor course. It is designed to focus on recent changes to OSHA's most common hazards and violations. OSHA's 29 CFR 1926 Construction Industry Standard will be provided. Construction Industry voluntary compliance outreach trainers are required to take this course every four years. If your card has expired you must also retake the OTI 500 course. Please be sure to fax a copy of your previous trainer card to the OTI Education Center prior to your course.

Course Objectives: Upon completion of the course, participants will be able to:

- ◇ Recommend current OSHA construction requirements and policies;
- ◇ Describe new construction standards;
- ◇ Identify training material resources; and
- ◇ Apply techniques and resources used by other construction outreach trainers.

503—Update for General Industry Outreach Trainer

Course Fee: \$600

General CEUs: 1.7

Course Schedule

Begin Date	End Date	City
Jan 19	Jan 21	Tampa, FL
Feb 16	Feb 18	Fort Lauderdale, FL
Mar 09	Mar 11	Orlando, FL
Apr 04	Apr 06	Fort Myers, FL
May 10	May 12	Miami, FL
May 23	May 25	Wesley Chapel, FL
Jun 20	Jun 22	Jacksonville, FL
Jul 18	Jul 20	Daytona Beach, FL
Sep 20	Sep 22	Orlando, FL
Oct 11	Oct 13	Miami, FL
Oct 31	Nov 02	Tampa, FL
Dec 05	Dec 07	Orlando, FL

This course is designed for private sector personnel who have completed the OTI 501 instructor course. It is designed to focus on recent changes in OSHA standards with regard to the most common hazards and violations. OSHA's 29 CFR 1910 General Industry Standard will be provided. This course is required for general industry voluntary compliance outreach trainers every four years. If your card has expired you must also retake the OTI 501 course. Please be sure to fax a copy of your previous trainer card to the OTI Education Center prior to your course.

Course Objectives: Upon completion of the course, participants will be able to:

- ◇ Locate and apply recently adopted or revised OSHA safety and health standards, policies, and procedures;
- ◇ Use recent changes in OSHA standards and regulations to supplement an ongoing safety and health program;
- ◇ Identify common violations of OSHA standards and propose abatement actions;
- ◇ Describe recent developments in abatement procedures for selected safety hazards; and
- ◇ Conduct internal training on OSHA regulations.

510 - Occupational Safety and Health Standards for the Construction Industry

**Also Available
Online**

General CEUs: 2.5

Course Fee: \$800

CILB: 31 contact hours including 1 hour of workplace safety

(Approval 0008709) **Additional \$50.00**

ABIH: 4.0 Safety CM Points

Course Schedule

Begin Date	End Date	City
Jan 18	Jan 21	Orlando, FL
Feb 07	Feb 10	Clearwater, FL
Feb 14	Feb 17	Miami, FL
Mar 07	Mar 10	Tampa, FL
Mar 15	Mar 18	Naples, FL
Apr 04	Apr 07	Daytona Beach, FL
Apr 11	Apr 14	Miami, FL
Apr 25	Apr 27	Wesley Chapel, FL
May 09	May 12	Gulfport, MS
May 23	May 26	Orlando, FL

Begin Date	End Date	City
Jun 06	Jun 09	Columbia, SC
Jun 13	Jun 16	Jacksonville, FL
Jul 11	Jul 14	Miami, FL
Aug 08	Aug 11	Wesley Chapel, FL
Aug 29	Sep 01	Miami, FL
Sep 12	Sep 15	Wesley Chapel, FL
Oct 24	Oct 27	Fort Lauderdale, FL
Nov 01	Nov 04	Fort Myers, FL
Nov 14	Nov 17	Orlando, FL
Dec 05	Dec 08	Tampa, FL

This course is the prerequisite to the OTI 500 course. It will cover OSHA policies, procedures, and standards for the construction industry as well as safety and health principles. Each section of the OSHA Construction Standards will be covered. Special emphasis will be placed on those areas that are more hazardous, using OSHA standards as a guide. OSHA's 29 CFR 1926 Construction Safety Standard will be provided. Upon successful completion of the course, the participant will receive a Construction Safety 30-hour course completion card.

Course Objectives: Upon completion of the course, participants will be able to:

- ◇ Select the appropriate OSHA standards that apply to a hazard;
- ◇ Identify elements of a successful construction safety program;
- ◇ Identify the more frequently cited OSHA standards; and

Course Topics

- | | | |
|------------------------------------|----------------------------------|----------------------------|
| ◇ Introduction to OSHA | ◇ Fire protection and prevention | ◇ Excavation |
| ◇ Hazard Violation Search Workshop | ◇ Materials handling | ◇ Concrete construction |
| ◇ Safety programs | ◇ Tools-hand and power | ◇ Steel erection |
| ◇ Recordkeeping | ◇ Welding | ◇ Underground construction |
| ◇ Hazard communication | ◇ Electrical | ◇ Demolition |
| ◇ Health hazards in construction | ◇ Scaffolding | ◇ Blasting |
| ◇ Personal protective equipment | ◇ Fall protection | ◇ Stairways and ladders |
| | ◇ Cranes and rigging | |
| | ◇ Motor vehicles | |

511—Occupational Safety and Health Standards for the General Industry

**Also Available
Online**

General CEUs: 2.5
ABIH: 4.0 Safety CM Points

Course Fee: \$800

Course Schedule

Begin Date	End Date	City
Jan 03	Jan 06	West Palm Beach, FL
Jan 18	Jan 21	Wesley Chapel, FL
Jan 24	Jan 27	Coconut Grove, FL
Feb 14	Feb 17	Orlando, FL
Feb 15	Feb 18	Key West, FL
Feb 28	Mar 03	Nashville, TN
Mar 01	Mar 04	Naples, FL
Mar 28	Mar 31	Clearwater, FL
Apr 11	Apr 14	Daytona Beach, FL
May 16	May 19	Wesley Chapel, FL

Begin Date	End Date	City
Jun 27	Jun 30	Miami, FL
Jul 18	Jul 21	Wesley Chapel, FL
Jul 25	Jul 28	Daytona Beach, FL
Aug 15	Aug 18	Orlando, FL
Sep 12	Sep 15	Columbia, SC
Sep 19	Sep 22	Tampa, FL
Oct 04	Oct 07	Fort Myers, FL
Oct 11	Oct 14	Jacksonville, FL
Nov 07	Nov 10	Wesley Chapel, FL
Nov 14	Nov 17	Fort Lauderdale, FL
Nov 28	Dec 01	Orlando, FL

This course for private sector personnel covers OSHA policies, procedures, and standards, as well as general industry safety and health principles. This course is the prerequisite to the OTI 501 course. Topics include scope and application of the OSHA general industry standards. Special emphasis is placed on those areas that are the most hazardous, using OSHA standards as a guide. OSHA's 29 CFR 1910 General Industry Safety Standard will be provided.

Course Objectives: Upon completion of the course, participants will be able to:

- ◇ Locate and apply OSHA Safety and Health standards, policies and procedures;
- ◇ Utilize OSHA standards and regulations to supplement an on-going safety and health program;
- ◇ Identify common violations of OSHA standards and propose abatement actions; and
- ◇ Describe appropriate abatement procedures for selected safety and health hazards.

Course Topics

- ◇ Hazard violation
- ◇ Means of egress and fire protection
- ◇ Personal protective equipment
- ◇ Material handling
- ◇ Electrical safety standards and work practices
- ◇ Hazard communication
- ◇ Introduction to industrial hygiene
- ◇ Machine guarding
- ◇ Lockout/Tagout
- ◇ Walking/working surfaces
- ◇ OSHA recordkeeping
- ◇ Ergonomics



521 - Guide to Industrial Hygiene

Course Fee \$800

General CEUs: 2.5

ABIH: 4.0 Fundamental Industrial Hygiene CM Points

Course Schedule

Begin Date	End Date	City
Jan 03	Jan 06	Jacksonville, FL
Feb 22	Feb 25	Wesley Chapel, FL
Apr 04	Apr 07	Coconut Grove, FL
Aug 08	Aug 11	Tampa, FL
Oct 11	Oct 14	Orlando, FL

This course is for private sector personnel who are interested in increasing their knowledge of industrial hygiene practices and related OSHA regulations and procedures. It will focus on the OSHA health standards and address topics such as permissible exposure limits, respiratory protection, engineering controls, hazard communication, sampling instrumentation, hearing conservation, workplace health program elements, and other industrial hygiene topics.

Course Objectives: Upon the completion of the course, participants will be able to:

- ◇ Define terms relating to OSHA health requirements;
- ◇ Recognize potential health hazards in the work place;
- ◇ Perform basic health hazard evaluations using OSHA sampling procedures;
- ◇ Recommend suitable strategies for controlling hazardous conditions; and
- ◇ Describe the elements required for an effective workplace health program.

Course Topics

- ◇ Air contaminant sampling
- ◇ Air sampling laboratory
- ◇ Compliance with air contaminant standards, hazard communication, hazardous waste standards, asbestos standard, bloodborne pathogens standard, the noise standard, respirator standard, ventilation standards and laboratory ventilation
- ◇ Detector tube sampling
- ◇ Elements of a workplace health program
- ◇ Hazard violation workshop
- ◇ Health hazard recognition
- ◇ OSHA ergonomic guidelines
- ◇ OSHA recordkeeping

2015 - Hazardous Materials

Course Fee \$800

General CEUs: 2.5

ABIH: 4.0 Industrial Hygiene CM Points

Course Schedule

Begin Date	End Date	City
Feb 07	Feb 10	Savannah, GA
May 30	Jun 02	Coconut Grove, FL
Jun 27	Jun 30	Wesley Chapel, FL
Oct 17	Oct 20	Nashville, TN

This course is designed to give participants an overview of OSHA's General Industry standards and other consensus and proprietary standards that relate to hazardous materials.

Course Objectives: Upon completion of the course, participants will be able to:

- ◇ Describe methods for detecting unsafe storage conditions for hazardous materials;
- ◇ Explain electrical factors that may contribute to the creation or abatement of hazardous conditions;
- ◇ Relate hazardous conditions and unsafe procedures to the appropriate standards for abatement actions;
- ◇ Specify the necessary precautions for hazardous operations, such as the dispensing of flammable and combustible liquids; and
- ◇ Describe proper abatement techniques for selected industrial hazards.

Course Topics

- ◇ Flammable and combustible liquids
- ◇ Compressed gases
- ◇ LP-gas
- ◇ Cryogenic liquids
- ◇ Spraying and dipping processes
- ◇ Electrical equipment
- ◇ Process safety management
- ◇ Hazardous waste operations and emergency response
- ◇ Permit-required confined space entry
- ◇ Welding
- ◇ Ammonia

2045 - Machinery and Machine Guarding Standards

Course Fee: \$800

General CEUs: 2.5

Course Schedule

Begin Date	End Date	City
Mar 14	Mar 17	Coconut Grove, FL
Jun 27	Jun 30	Tampa, FL
Nov 07	Nov 10	Orlando, FL

This course familiarizes the student with a wide variety of common machinery, related safety standards, and guarding methods. Guidance is provided with respect to the hazards associated with various kinds of machinery and the control of hazardous energy sources (lockout/tagout). The course presents an approach to machine inspection that enables participants to recognize hazards and applicable standards and provides options to achieve abatement. Participants will tour a private sector facility with extensive and varied metal working operations. Participants will also be given an opportunity to apply hazard recognition concepts on a site inspection at an operating facility with a variety of machine operations. They will evaluate and document any machinery and machine guarding hazards, and then return to the classroom to research the standards for citation references.

Course Objectives: Upon completion of the course, participants will be able to:

- ◇ Identify common machines and associated hazards found within a broad spectrum of industries;
- ◇ Identify hazards that occur around machinery, including but not limited to, woodworking equipment, metal working equipment, and mechanical power presses;
- ◇ Identify additional hazards common to abrasive wheels, power transmissions, mills and calendars, and portable tool safeguarding;
- ◇ Select appropriate OSHA standards that apply to a hazard; and
- ◇ Present options to achieve abatement.

Course Topics

- ◇ Hazards and standards workshop
- ◇ Review of machinery and machine guarding
- ◇ Review of guarding and devices
- ◇ Control of hazardous energy sources (lockout/tagout)
- ◇ Electrical safety-related work practices

Special Course Benefits

Participants will tour a private sector facility with extensive and varied metalworking operations.

Participants will also be given the opportunity to apply hazard recognition concepts on a site inspection at an operating facility with a variety of machine operations. They will evaluate and document any machinery and machine guarding hazards, and then return to the classroom to research the standards for citation references.

Personal Protective Equipment Requirement

Participants are required to bring safety shoes, safety glasses and appropriate clothing for field exercise.

2225 - Respiratory Protection

Course Fee: \$800

General CEUs: 1.9

ABIH: 2.0 Industrial Hygiene CM Points

Course Schedule

Begin Date	End Date	City
Jan 10	Jan 13	Coconut Grove, FL
Mar 21	Mar 24	Wesley Chapel, FL
May 09	May 12	Orlando, FL
Jul 11	Jul 14	Miami, FL
Sep 26	Sep 29	Jacksonville, FL
Nov 14	Nov 17	Wesley Chapel, FL

This course covers the requirements for the establishment, maintenance and monitoring of a respirator program.

Course Objectives: Upon completion of the course, participants will be able to:

- ◇ Identify and describe the major elements of a respiratory protection program following 29 CFR 1910.134;
- ◇ Discuss the technical aspects for the proper selection and use of respirators; and
- ◇ Evaluate compliance with OSHA's respirator protection standard.
- ◇ Terminology
- ◇ OSHA and ANSI standards
- ◇ NIOSH certifications and medical evaluation recommendations
- ◇ Supplied air respirators
- ◇ Self-contained breathing apparatus
- ◇ Confined space entry
- ◇ Respirator fit testing
- ◇ Respirator selection
- ◇ Maintenance and care
- ◇ Medical evaluations
- ◇ Training and information
- ◇ Respirator use
- ◇ Recordkeeping

Course Topics

Medical Approval Requirement

Participation in the qualitative fit testing laboratory requires medical approval to wear half-mask, air-purifying respirator.

Special Course Benefits

- ◇ Laboratories on respirator selection
- ◇ Qualitative and quantitative fit testing
- ◇ Use of large array of respiratory and support equipment for hands on training.

2250 - Principles of Ergonomics Applied to Work Related Musculoskeletal and Nerve Disorders

Course Fee: \$600

General CEUs: 1.9

ABIH: 3.0 Industrial Hygiene

Course Schedule

Begin Date	End Date	City
Apr 11	Apr 13	Orlando, FL
Dec 12	Dec 14	Tampa, FL

This course introduces students to the applications of ergonomic principles for the reduction of stress and strain to an employee's body and the control of workplace musculoskeletal and nerve disorders.

Course Objectives: Upon completion of the course, participants will be able to:

- ◇ Describe the impact of job and workplace design on employee safety and health;
- ◇ Identify workplace characteristics that may contribute to cumulative trauma disorders;
- ◇ List improvements in job, workstation and equipment design that can reduce the potential for musculoskeletal injury; and
- ◇ Analyze manual lifting tasks and estimate reasonable lifting limits.

Course Topics

- ◇ Physiology
- ◇ Anthropometry
- ◇ Cumulative trauma disorders
- ◇ Manual lifting
- ◇ Back injury control
- ◇ Job hazard analysis
- ◇ Medical surveillance
- ◇ Administrative and engineering controls
- ◇ NIOSH work practices guide to manual lifting
- ◇ Heat Stress
- ◇ Rapid upper limb assessment technique
- ◇ Job observation techniques

Special Course Benefits

- ◇ Participants will conduct task analysis of actual videotaped jobs looking for musculoskeletal disorder risk factors.
- ◇ Working as a team, participants will then apply the concepts presented in the class to develop effective control strategies for each job.

Required Materials

Some math will be required. Participants will need calculators with basic functions.

2264 - Permit Required Confined Space Entry

Course Fee: \$600.00

General CEUs: 1.9

ABIH: 3.0 Industrial Hygiene CM Points

Course Schedule

Begin Date	End Date	City
Feb 23	Feb 25	West Palm Beach, FL
May 02	May 04	Wesley Chapel, FL
Jun 14	Jun 16	Orlando, FL
Aug 24	Aug 26	Fort Myers, FL
Oct 11	Oct 13	Wesley Chapel, FL

This course is designed to increase students' knowledge of hazards associated with confined space entry and their environment.

Course Objectives: Upon completion of the course, participants will be able to:

- ◇ Define terms specific to permit-required confined space operations;
- ◇ Identify current standard governing permit-required confined space entry procedures;
- ◇ Describe hazards associated with permit spaces;
- ◇ Demonstrate the proper operation of certain testing instruments and explain their limitations; and
- ◇ Describe appropriate ventilation personal protective equipment and emergency procedures that are necessary for entry into permit spaces.

Course Topics

- ◇ Permit space hazards
- ◇ Entry procedures
- ◇ Ventilation requirements
- ◇ Personal protective equipment
- ◇ Permit system

Required Materials

Some math will be required. Participants will need calculators with log functions.

3010 - Excavation, Trenching and Soil Mechanics

Course Fee: \$600.00

General CEUs: 1.9

ABIH: 3.0 Safety CM Points

Course Schedule

Begin Date	End Date	City
Jan 24	Jan 26	Miami, FL
Feb 21	Feb 23	Coconut Grove, FL
May 09	May 11	Wesley Chapel, FL
Jul 25	Jul 27	Orlando, FL
Sep 26	Sep 28	Tampa, FL

This course focuses on OSHA standards and on the safety aspects of excavation and trenching. Students are introduced to practical soil mechanics and its relationship to the stability of shored and unshored slopes and walls of excavations. Various types of shoring (wood timbers and hydraulic) are covered. Testing methods are demonstrated and an exercise is conducted, allowing students to use instruments such as penetrometers, torvane shears, and engineering rods.

Course Topics

- ◇ Excavations
- ◇ Soil classification
- ◇ Sloping and benching
- ◇ Timber shoring and trenches
- ◇ Aluminum hydraulic shoring for trenches
- ◇ Alternatives to timber shoring
- ◇ Selection of protective system

Personal Protective Equipment Requirements

Participants are required to bring safety shoes, hard hat, safety glasses, and appropriate clothing for field exercise.

3095 - Electrical Standards

Course Fee: \$800

General CEUs: 2.5

ABIH: 3.0 Safety CM Points

Course Schedule

Begin Date	End Date	City
Feb 22	Feb 25	Tampa, FL
Jul 05	Jul 08	Orlando, FL
Jul 25	Jul 28	Coconut Grove, FL
Oct 03	Oct 06	Sumterville, FL
Dec 05	Dec 08	Wesley Chapel, FL

This course is designed to provide the participant with an overview of electrical installations and equipment. Emphasis is placed on controlling electrical hazards by the application of OSHA standards and the National Electrical Code.

Course Objectives: Upon completion of the course, participants will be able to:

- ◇ Discuss the effects of electrical current on the human body with respect to voltage, current path, and the duration of exposure;
- ◇ Understand OSHA electrical standards;
- ◇ Detect electrical hazards, determine which OSHA standards apply, and achieve the appropriate abatement;
- ◇ Understand the proper use of safety electrical test equipment; and
- ◇ Understand how the National Electrical Code ties into OSHA's electrical standard.

NOTE: There will also be an electrical lab as part of this course.

Course Topics

- ◇ Electrical Fundamentals
- ◇ Grounding requirements
- ◇ Overcurrent protection
- ◇ Single- and three-phase systems
- ◇ Electrical requirements for portable equipment
- ◇ Electrical requirements for fixed equipment
- ◇ Ground fault circuit interrupters
- ◇ Hazardous locations
- ◇ Electrical safety-related work practices
- ◇ Dielectric personal protective equipment
- ◇ Temporary wiring
- ◇ Portable generators
- ◇ Branch circuits

3110 - Fall Arrest Systems

Course Fee: \$800

General CEUs: 1.7

ABIH: 3.0 Safety CM Points

Course Schedule

Begin Date	End Date	City
Feb 07	Feb 09	Tampa, FL
Aug 15	Aug 17	Orlando, FL
Nov 07	Nov 09	Tampa, FL

This course provides an overview of state-of-the-art technology for fall protection and current OSHA requirements. Topics covered include the principles of fall protection, the components of fall arrest systems, the limitations of fall arrest equipment, and OSHA policies regarding fall protection. Course features a one-day field exercise demonstrating fall protection equipment.

Course Objectives: Upon completion of the course, participants will be able to:

- ◇ Identify various types of fall protection and their components;
- ◇ Recognize fall hazards and identify abatement methods for fall hazards;
- ◇ Define the proper use of fall protection equipment and personal fall arrest systems; and
- ◇ Select proper standards for citation purposes.

Course Topics

- ◇ 29 CFR 1926 Subpart M
- ◇ Sample Fall Protection plans
- ◇ Consensus standards and summaries
- ◇ Fall hazard analysis
- ◇ Fall accidents and fatalities
- ◇ Litigation decisions
- ◇ Pre and post test

Personal Protective Equipment

Participants are required to bring safety shoes, safety glasses and appropriate clothing for field exercise.

Prerequisites:

All participants must have completed OTI 510 or have equivalent construction training or experience.

5400 - Train the Trainer For Maritime Industry

Course Fee: \$800.00

General CEUs: 2.5

Course Schedule

Begin Date	End Date	City
Jan 10	Jan 13	Tampa, FL
Feb 28	Mar 03	Gulfport, MS
May 02	May 05	Beaufort, NC
May 16	May 19	Orlando, FL
Jun 13	Jun 16	Savannah, GA

Begin Date	End Date	City
Jul 11	Jul 14	Miami, FL
Aug 29	Sep 01	Jacksonville, FL
Oct 17	Oct 20	Charleston, SC
Dec 05	Dec 08	Mobile, AL

Making Waves in the Maritime Industry could be a way to describe this unique train the trainer course. Labor, Management and Insurance Representatives from the Maritime Industry partnering with local, regional and national representatives of OSHA, the Alabama Technology Network, and the University of South Florida's OSHA Training Institute Education Center formed the Gulf Coast Maritime Safety Alliance in order to address the safety and health training needs of workers and employers in the Maritime Industry. This unique course is a product of that Safety Alliance. The course has been designed to train the people who will train the Maritime workers in OSHA 10 and 30 hour hazard recognition courses. The course has been designed for all people working in the Maritime Industry who either want to learn more about workplace safety and health hazard recognition or who want to become OSHA authorized trainers for the 10 and 30 hour Maritime courses. Special emphasis have been placed on those areas in the Maritime industry that are the most hazardous, using the OSHA 29 CFR 1915; 1917; and 1918 standards as a resource. Course participants who successfully complete the course and pass a final exam will become OSHA Authorized Maritime Outreach Trainers, authorized to conduct both the 10 and 30 hour Maritime outreach courses.

Prerequisites

◆ Two years of occupational safety and health experience in the ship repairing, shipbuilding, shipbreaking, marine terminals, or longshoring industry:

And at least **one** of the following:

- ◆ Two additional years of occupational safety and health experience in any industry;
- ◆ A degree in occupational safety and health from an accredited college or university; OR
- ◆ Certification as an Associate Safety Professional (ASP), Certified Safety Professional (CSP), Certified Industrial Hygienist (CIH), Certified Marine Chemist (CMC), or Certified Safety and Health Manager (CSHM)

5600 - Disaster Site Worker Train the Trainer Course

Course Fee: 800.00

General CEUs: 2.5

Course Schedule

Begin Date	End Date	City
Feb 15	Feb 18	Wesley Chapel, FL
Apr 18	Apr 21	West Palm Beach, FL
Jun 20	Jun 23	Fort Myers, FL
Aug 29	Sep 01	Orlando, FL
Dec 12	Dec 15	Jacksonville, FL

The goal of this course is to prepare experienced trainers to present Disaster Site Worker (OSHA 7600). Trainers are given the opportunity to practice knowledge, skills and attitudes through discussion, planned exercises, demonstrations and presentations. Participants receive lesson plans and training materials for the *Disaster Site Worker Course* as well as information on training techniques and resources. Trainers will be expected to present a selected portion of the *Disaster Site Worker Course* and to use a "presentation evaluation" sheet to evaluate other presenters.

Course Objectives: Upon completion of this course, participants will be able to:

- ◇ Apply elements of successful adult training programs;
- ◇ Acquire new knowledge, skills and attitudes with regard to disaster site work; and
- ◇ Demonstrate the ability to properly don, doff and inspect air-purifying respirators in order to accomplish successful delivery of the Disaster Site Worker Course.

Prerequisites:

- ◇ Be a current authorized-OSHA Construction or General Industry Outreach Trainer
- ◇ Have completed a 40-Hour (minimum) HAZWOPER training course
- ◇ Have a minimum of three years experience as an occupational safety and health trainer in Hazmat or emergency response .

5602 - Update Course Disaster Site Worker Train the Trainer

Course Fee: 250.00

General CEUs: .8

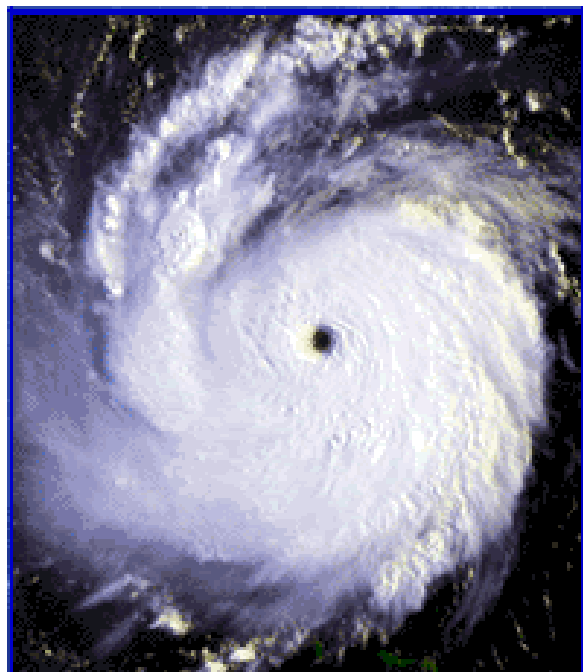
Course Schedule

Begin Date	City
Apr 11	Wesley Chapel, FL
Aug 22	Coconut Grove, FL

The goal of this course is intended to update the Authorized Disaster Site Worker Trainer with new technical and regulatory information related to disaster response. In addition, participants will have the opportunity to share "lessons learned" and refresh their knowledge about various topics covered previously in the Disaster Site Worker Train-the-Trainer #5600 course.

Prerequisites:

- ◇ Be a current authorized-OSHA Disaster Outreach Trainer.



6000 - Collateral Duty Course for Other Federal Agencies

Course Fee: \$800

General CEUs: 2.2

ABIH: 3.5 Safety CM Points

Course Schedule

Begin Date	End Date	City
Jan 31	Feb 04	Orlando, FL
Feb 15	Feb 18	West Palm Beach, FL
Jun 20	Jun 23	Wesley Chapel, FL

Begin Date	End Date	City
Aug 01	Aug 04	Miami, FL
Oct 24	Oct 28	Tampa, FL

This course introduces federal safety and health personnel to the OSHA Act, Executive Order 12196, 29 CFR 1960, and 29 CFR 1910. It enables them to recognize basic safety and health hazards in their own workplaces and to effectively assist agency safety and health officers in their inspection and abatement efforts. OSHA's 29 CFR 1910 General Industry Standard (1900-1910.999 and 1910.1000 to end) will be provided.

Course Objectives: Upon completion of the course, participants will be able to:

- ◇ Describe the OSH Act 29 CFR 1960 and 29 CFR 1910;
- ◇ Describe major provisions of Executive Order 12196;
- ◇ Identify selected safety and health hazards and the corresponding OSHA Standards, such as machine guarding, portable tools, welding, cutting, and brazing;
- ◇ Describe abatement methods for selected safety and health hazards such as hazardous materials; and
- ◇ Explain and apply workplace inspection procedures consistent with established OSHA policies, procedures, and directives.

Course Topics

- ◇ Hazard communication
- ◇ Inspection field trip, write up and review
- ◇ Introduction to the OSHA Act and 29 CFR 1960
- ◇ Introduction to OSHA standards and hazard violation workshop and review
- ◇ Office safety
- ◇ Walking and working surfaces
- ◇ Means of egress and fire protection
- ◇ Personal protective equipment
- ◇ Material handling
- ◇ Electrical standards
- ◇ Introduction to industrial hygiene

Special Course Benefits:

Participants will be introduced to the process of site inspection (i.e., what hazardous conditions of activities may be observed in the work environment). They will be taken to an active government facility, where they will evaluate and document any observed hazards. After returning to the classroom, they will research and select the standards applicable to the observed hazards. Presentations of findings are made to the class.

The hazard violation workshop will introduce the participants to the format of the OSHA Standards. They will be shown how the numbering system works, then asked to identify the applicable standard for approximately 40 hazardous conditions.

7000 - OSHA's Ergonomics Guidelines Training for Nursing Homes

Course Fee: \$160

General CEUs: .7

Course Schedule

Begin Date	City
Feb 08	Wesley Chapel, FL

The focus of this 8-hour course is to use OSHA's Ergonomics Guidelines for Nursing Homes to develop a process to protect workers in nursing homes. The course focuses on analyzing and identifying ergonomic problem jobs and practical solutions to address these problems.

Featured topics include:

- ◇ Developing an ergonomics process; and
- ◇ Risk factors in the nursing home guidelines; identifying problem jobs including protocols for resident assessment and implementing solutions including work practices and engineering solutions.

The target audience for this course is the nursing home administrator and/or human resource personnel designated with the responsibility to develop an ergonomics process.

7100-Introduction to Machinery and Machine Safeguarding

Course Fee: \$125

General CEUs: .4

Course Schedule

Begin Date	City
Oct 14	Orlando, FL

The main focus of this course is to increase the participant's knowledge and skill in proper machine safeguarding techniques, and to highlight the benefits of guarding various types of machinery. It is the employer's responsibility to identify and select the safeguard necessary to protect employees and others in the work area, as well as provide appropriate training in safe work practices. Knowing when and how to properly safeguard machinery can reduce or eliminate the potential for accidents and injuries.

7105 - Introduction to Evacuation and Emergency Planning

Course Fee: \$160

General CEUs: .4

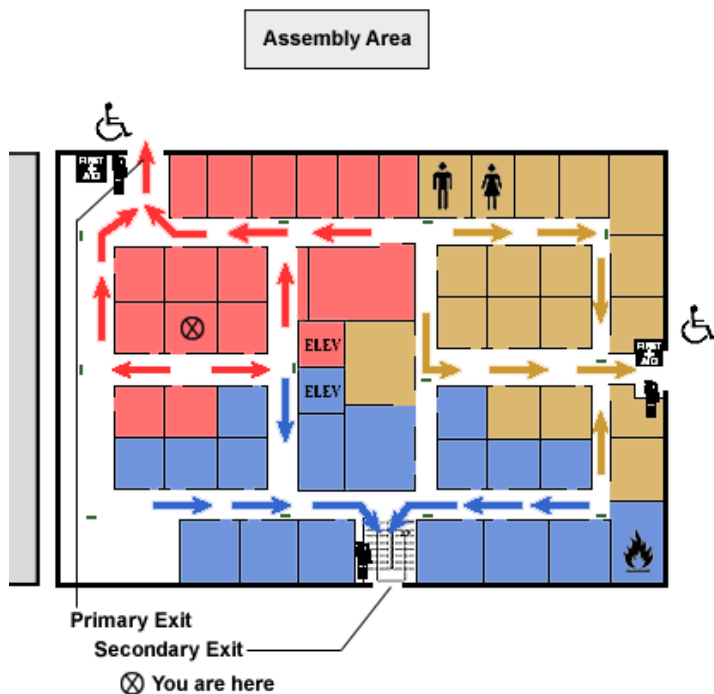
Course Schedule

Begin Date	City
Jun 17	Fort Lauderdale, FL
Sep 30	Daytona Beach, FL

Evacuation and Emergency Planning focuses on OSHA requirements for emergency action plans and fire protection plans. Preparing for emergencies is a basic principle of workplace safety and health.

Course Objectives: Upon completion of the course, participants will be able to:

- ◇ Give reasons for emergency action plans and fire prevention plans and when they are required for a workplace;
- ◇ Implement elements for a good evacuation plan; and
- ◇ Describe features of design and maintenance of good exit routes.



7115 - Lockout/Tagout - Controlling Hazardous Energy to Prevent Workplace Injury

Course Fee: \$160

General CEUs: .6

Course Schedule:

No classes are scheduled at this time.

Check our website for updates or contact our office to schedule a contract class.

In this course, students will learn about the role and responsibility of the employer to develop and implement an energy control program, or lock-out/tag-out (LOTO) for the protection of workers while performing servicing and maintenance activities on machines and equipment. In addition, students will learn how to detect hazardous conditions and implement control measures as they relate to the control of hazardous energy. This course is also designed to assist students in the development and implementation of energy control programs, including written isolation procedures, training for authorized and affected employees, and periodic inspection of energy control procedures.

Topics include the understanding and application of definitions relating to OSHA's Control of Hazardous Energy Standard, types of hazardous energy, energy isolation options, written program requirements, and training guidelines.

At the conclusion of this course, the participant will be able to explain the importance of energy control programs, procedures, training, audits and methods of controlling hazardous energy, and will demonstrate the knowledge and skills required to safely perform servicing and maintenance activities.

7120 - Introduction to Combustible Dust Hazards

Course Fee: \$275

General CEUs: 1.3

Course Schedule

Begin Date	End Date	City
Jun 6	Jun 7	Wesley Chapel, FL
Jul 28	Jul 29	Wesley Chapel, FL

The focus of this two-day course is to provide private businesses within general industry with an opportunity to enhance their awareness of the hazards posed by combustible dust. This course will help these industry leaders to gain the knowledge and strategies that can help them to assure employee safety while using or producing materials that generate combustible dust. The course will focus on recognizing the hazards and risks associated with combustible dust, as well as developing the controls and strategies that can help them prevent or mitigate combustible dust fires and explosions. Key topics include: combustible dust explosions as a national problem, recognized control and mitigation methods, and control of electrical installation hazards for combustible dust areas. In addition, the course will offer information on the National Emphasis Program (NEP) for combustible dust inspections and OSHA and consensus standards that impact industries that generate combustible dust.

The target audience is members of private industry to include owners and managers, supervisors, maintenance and engineering staff, and other employees. Union officials and representatives may also benefit from attendance.

7200 - Bloodborne Pathogens Exposure Control for Healthcare Facilities

Course Fee: \$160

General CEUs: .7

Course Schedule

Begin Date	City
Feb 09	Wesley Chapel, FL
Oct 11	Orlando, FL

The purpose of this one-day course is to develop a Bloodborne Pathogens Exposure Plan for healthcare facilities using a step-by-step approach. Featured topics include an Introduction to the Bloodborne Pathogens Standard, the Exposure Control Plan, Exposure Determination, Methods of Control, Vaccinations and Evaluations, Training and Information, and Recordkeeping.

The target audience is the program administrator, manager, or other personnel designated with the responsibility of developing a Bloodborne Pathogens Exposure Control Plan for a small healthcare facility.



7205 - Health Hazard Awareness

Course Fee: \$160

General CEUs: .7

Course Schedule

Begin Date	City
Feb 10	Wesley Chapel, FL
Apr 20	Orlando, FL
May 27	Coconut Grove, FL
Aug 30	Tampa, FL
Dec 14	Jacksonville, FL

The goal of the Health Hazards Awareness course is to assist participants with recognizing potential health hazards in the workplace, and avoiding, minimizing, controlling or eliminating them whenever possible. The target audience is the small employer, business owner, or manager who would like to obtain information about health hazards found in the workplace. The training is also suitable for employees and employee representatives. Exposure to health hazards continues to be common in spite of advances in control measures and techniques. OSHA's current strategic plan has made a reduction in some specific health hazards such as lead, silica, and ergonomic related injuries a high priority. This course will provide information on the types of health hazards and discuss ways to recognize, evaluate, and control them in the workplace.

Course Topics

- ◇ Identification of Hazard
- ◇ Sources of Exposure
- ◇ Health Hazard Information
- ◇ Evaluation of Exposure
- ◇ Engineering and work practice controls

7210 - Pandemic Influenza and Workplace Preparedness

Course Fee: \$160

General CEUs: .57

Course Schedule

No classes are scheduled at this time.

Check our website for updates or contact our office to schedule a contract class.

The focus of this one-day course is to provide private businesses within general industry with an opportunity to enhance their awareness and preparation for a pandemic. This course will help these business leaders to gain the knowledge and strategies that can help them to assure business continuity and employee safety in the midst of a pandemic influenza event. The course will focus on recognizing the reality of the hazards and risks associated with a pandemic, as well as developing the strategies that can help a business, their community, and their family with realistic preparation for a pandemic. Key topics include: the potential impact of a pandemic influenza event on a business and community, the critical elements of a preparedness plan, and realistic, sound strategies for supporting continuity of a business their community and their family. In addition, the course will offer information on strategies that can be used to control the spread of the virus, to help minimize exposure for employees and family and increase the awareness of participants of the many valuable resources available particularly from OSHA and other government agencies.

The target audience is the private business leader and members of their management team that may be integral to preparedness planning, including but not limited to, finance, security, safety, and human resources.

7300 - Understanding OSHA's Permit Required Confined Space Standards

Course Fee: \$160

General CEUs: .7

Course Schedule

Begin Date	City
Apr 21	Orlando, FL
May 26	Coconut Grove, FL
Aug 31	Tampa, FL
Dec 13	Jacksonville, FL

The primary objective of this course is to increase the participant's knowledge of OSHA's permit-required confined space (permit space) standard, 29 CFR 1910.146. Areas of instruction include scope and definitions, general requirements, permit space programs, rescue and training. Completion of this course does not fulfill the training requirements contained in 29 CFR 1910.146, nor does it certify the student as a "competent person." The target audience is the small employer or a representative (e.g. line supervisor or manager) designated with the responsibility to develop a permit space program.



7400 - Trainer Course in Construction Noise

Course Fee: \$160

General CEUs: .7

Course Schedule

Begin Date	City
Mar 21	Orlando, FL
Jun 15	Fort Lauderdale, FL

Many construction jobs, such as concrete work, site excavation, highway construction, and carpentry involve high levels of noise. Major sources include heavy equipment, such as loaders, dozers, and cranes, as well as jackhammers and chipping guns.

There is a large body of literature describing occupational hearing loss from noise exposure. OSHA commissioned several studies during 1997-1999 to provide recent information targeted specifically to the construction population. These studies show that as many as 750,000 US construction workers are currently exposed to hazardous noise levels (defined as a time weighted average of 85 dBA or above for 8 hours) on the job and that regular hearing protector use in the construction industry averages only about 15 to 33 percent among these noise-exposed workers. The highest concentrations of workers with potentially hazardous noise exposures occur in highway and street construction, carpentry and concrete work.

OSHA believes that these studies show that many US construction workers suffer hearing loss from noise at their worksites.

Course Objectives At the conclusion of this course, participants will be able to:

- ◇ Describe the properties of sound;
- ◇ Discuss noise-induced hearing loss;
- ◇ Explain OSHA's construction industry noise standards;
- ◇ Demonstrate the use of sound level meter and noise dosimeter;
- ◇ Describe methods of controlling noise exposure at construction sites; and
- ◇ Demonstrate the use of OSHA's construction noise outreach training material.

7405 - Fall Hazard Awareness for the Construction Industry

Course Fee: \$160

General CEUs: .7

Course Schedule

Begin Date	City
Sep 01	Tampa, FL
Dec 12	Jacksonville, FL

The goal of this course is to provide small construction employers and employees with information on recognizing potential fall hazards at their work sites and suggest ways to avoid, minimize, control or prevent them whenever possible. Specifically, this course will identify factors that contribute to common fall hazards, explain how to analyze work areas for fall hazards, discuss hierarchy of controls for fall hazards, and describe OSHA regulations and resources addressing fall protection.

Topics:

- ◆ Identifying Fall Hazards
- ◆ Analyzing Fall Hazards
- ◆ Preventing Fall Hazards
- ◆ OSHA Resources Addressing Fall Hazards
- ◆ Appendices



7410 - Managing Excavation Hazards

Course Fee: \$160

General CEUs: .6

Course Schedule

Begin Date	City
Sep 02	Tampa, FL

In this course, students will learn about the role and responsibility of the employer to assign a competent person to the excavation site and arm that person with the knowledge to perform the work properly. Topics include the understanding and application of definitions relating to OSHA's Excavation Standard (Subpart P), excavation hazards and control measures, soil analysis techniques, protective system requirements and emergency response. At the conclusion of this course, the participant will understand the importance and duties of a competent person towards excavation work and will have the knowledge and skills that are required to perform those duties.

7415 - OSHA Construction Industry Requirements: Awareness of Major Hazards and Prevention Strategies

Course Fee: \$275

General CEUs: 1.1

Course Schedule

Begin Date	End Date	City
Jan 24	Jan 25	Wesley Chapel, FL
Mar 22	Mar 23	Orlando, FL
Jun 13	Jun 14	Ft Lauderdale, FL
Oct 12	Oct 13	Wesley Chapel, FL

This course provides federal employees** with pertinent information regarding OSHA requirements and guidelines applicable to construction industry activities and operations. The goal of the course is to help participants gain an awareness level necessary to be able to describe major construction hazards and prevention strategies.

** In addition to federal employees this course will help private personnel and supervisors understand the hazards and prevention strategies for OSHA focus four hazards.

Topics include the recognition of major safety and health hazards in the construction industry, prevention strategies which include safety and health management systems, OSHA requirements and guidelines, and resources available. The course is set up as a facilitated, interactive training session focusing on class discussion and group activities. It is a two-day course, consisting of 12 hours of instruction.

This training will enable the participant to describe major construction hazards and prevention strategies, specifically the student will be able to:

- Describe major safety and health hazards in the construction industry
- Describe prevention strategies based on OSHA standards and guidelines
- Utilize resources available that support construction industry safety

7500 - Introduction to Safety and Health Management

Course Fee: \$160

General CEUs: .7

Course Schedule

Begin Date	City
Feb 11	Wesley Chapel, FL
Apr 22	Orlando, FL
May 27	Coconut Grove, FL
Jun 16	Ft Lauderdale, FL
Sep 27	Daytona Beach, FL
Oct 12	Orlando, FL

Experience obtained through inspections, consultation visits, and the Safety and Health Achievement Recognition Program (SHARP) and the Voluntary Protection Program (VPP) visits has convinced OSHA that an effective safety and health management system in the workplace is the key to reducing the number and severity of workplace injuries and illnesses. The result is lower accident-related costs. Other benefits include reduced absenteeism, lower turnover, higher productivity and improved employee morale.

The focus of this one-day workshop is the effective implementation of a company's safety and health management system. The workshop addresses the four core elements of an effective safety and health system and those central issues that are critical to each elements proper management.

Course Objectives At the conclusion of this course, the participants will be able to

- ◇ Explain the benefits of implementing a safety and health management system;
- ◇ Identify the core elements of an effective safety and health program; and
- ◇ Describe the key processes in each program element.

7505-Introduction to Accident Investigation

Course Fee: \$275

General CEUs: 1.1

Course Schedule

Begin Date	End Date	City
Mar 24	Mar 25	Orlando, FL
Apr 18	Apr 19	Orlando, FL
May 23	May 24	Coconut Grove, FL
Sep 28	Sep 29	Daytona Beach, FL
Dec 15	Dec 16	Jacksonville, FL

This course provides an introduction to basic accident investigation procedures and describes accident analysis techniques. The goal of the course is to help participants gain the basic skills necessary to conduct an effective accident investigation at their workplace. Topics include the primary reasons for conducting an accident investigation, employer responsibilities related to workplace accident investigations and a six step accident investigation procedure.

7510-Introduction to OSHA for Small Business

Course Fee: \$100.00

General CEUs: .4

Course Schedule

Begin Date	City
Feb 07	Wesley Chapel, FL
Aug 29	Tampa, FL
Sep 26	Daytona Beach, FL
Oct 13	Orlando, FL

This course provides an introduction to the Occupational Safety and Health Administration (OSHA) for owners and managers of small businesses. The goal of the course is to help participants gain an understanding of OSHA operations and procedures and learn how they can work with OSHA to prevent or reduce injuries and illnesses in their workplaces.

Included in the course is information on the background of OSHA, standards, the inspection process, implementing a safety and health program, and assistance available to small business. The course is set up as a facilitated, interactive training session focusing on class discussion and group activities.

7845-Recordkeeping Rules Seminar

Course Fee: \$150.00

General CEUs: .4

Course Schedule

Begin Date	City
Feb 07	Wesley Chapel, FL
Mar 18	Orlando, FL
May 20	Wesley Chapel, FL
Jul 15	Miami, FL
Aug 29	Tampa, FL
Sep 26	Daytona Beach, FL
Nov 18	Orlando, FL

This 4 hour course is designed to assist employers in identifying and fulfilling their responsibilities for posting certain records, maintaining records of illnesses and injuries and reporting specific cases to OSHA. Several practice sessions are included. This course is for employees of the private sector companies who have responsibilities under OSHA's revised Recordkeeping Rule 19 CFR 1904, which took effect January 1, 2003.

9001-Sub Part R-Steel Erection Safety Standards

Course Fee: \$150.00

General CEUs: .6

Course Schedule

Begin Date	City
Jul 07	Wesley Chapel, FL

This course provides Steel erectors an awareness of the changes in Steel erection standards contained in 1926 Sub Part R. Instruction includes the standard, the directive (which is a break down of what an OSHA compliance office will look for when visiting a job site), and "fill in the blank" help sheets to create a Site specific erection plan. Upon completion of this course the attendees will understand the safety requirements contained in Sub Part R, and be confident that they will ready if a compliance officer visits their job site. Included in the course are training/signoff sheets to make employees aware of OSHA standards and inquiries that will be made on site by an OSHA officer. By meeting these requirements contractors will be offering a safe and confident working environment for their employees.

Scaffolding Qualified Person

Course Fee: \$250

General CEUs: 1.1

Course Schedule

Begin Date	City
Jul 08	Tampa, FL

This one day course is designed to assist construction personnel in understanding and managing scaffolds.

We will discuss O.S.H.A requirements for scaffolds and best practices, in addition to minimum standards, will also be presented. This training will allow your employer to select you as the "Competent Person."

Topics:

- ◆ Introduction to Scaffolds
- ◆ Scaffold Capacity & Construction
- ◆ Scaffold Use & Fall Protection
- ◆ Suspended Scaffolds
- ◆ Aerial & Boom Lifts
- ◆ Specialty Scaffolds, Training & Review

Objectives

- ◆ Definition and duties of the scaffold competent person
- ◆ General hazards associated with scaffolds
- ◆ Proper construction and use of scaffolds
- ◆ Training requirements

Fall Protection Qualified Person

Course Fee: \$250

General CEUs: 1.1

Course Schedule

Begin Date	City
Feb 11	Orlando, FL
Jun 10	Wesley Chapel, FL

This one course is designed to assist construction personnel in understanding and managing fall exposures.

We will discuss OSHA requirements for fall protection. Best practices, in addition to minimum standards, will also be presented. This training will allow your employer to select you as the "Competent Person."

Topics:

- ◆ Guardrail & Net Systems
- ◆ Floor Holes & Falling Object Protection
- ◆ Personal Fall Arrest Systems
- ◆ Equipment Inspection & Maintenance
- ◆ Lifeline Systems
- ◆ Fall Exposures by Trade

40 Hour HAZWOPER

General CEUs: 2.4

Course Fee: \$800

Course Schedule

Begin Date	End Date	City
Jan 31	Feb 04	Wesley Chapel, FL
Mar 28	Mar 31	West Palm Beach, FL
Apr 18	Apr 22	Wesley Chapel, FL
Aug 22	Aug 26	Wesley Chapel, FL

This training course will help employees assess the hazards associated with uncontrolled hazardous waste sites to determine whether work can be conducted in a safe manner. Required competencies will be addressed through a combination of lecture, group exercises, and hands-on exercises.

Objectives:

- Develop a level of competency that would allow employees to recognize unsafe conditions at uncontrolled hazardous waste sites
- Develop the necessary tools to evaluate site conditions
- Develop decision matrix for establishment of safe work atmospheres through engineering controls, administrative controls, and/or personnel protective equipment (PPE)
- Discuss emergency responses to hazmat incidents to determine whether or not response can be taken in a safe manner

24 Hour HAZWOPER

General CEUs: 2.4

Course Fee: \$600

Course Schedule

Begin Date	End Date	City
Mar 01	Mar 03	Wesley Chapel, FL
Jun 01	Jun 03	Wesley Chapel, FL
Sep 19	Sep 21	Wesley Chapel, FL
Nov 01	Nov 03	Wesley Chapel, FL

This training is designed for hazardous waste and emergency response workers who must satisfy their 24-hour HAZWOPER training requirement. OSHA standards require employees to complete appropriate HAZWOPER training prior to entering or beginning work on an uncontrolled hazardous waste operation.

Upon successful completion of this OSHA accepted 24-hour HAZWOPER course, you will receive your University of South Florida OSHA Training Institute Education Center Program Certificate.

8 Hour HAZWOPER

Course Fee: \$250

General CEUs: .8

Course Schedule

Begin Date	City
Mar 11	Wesley Chapel, FL
Jul 15	Wesley Chapel, FL
Oct 28	Wesley Chapel, FL

This refresher training course will help employees assess the hazards associated with uncontrolled hazardous waste sites to determine whether work can be conducted in a safe manner

Course Evaluation:

Attendees will be evaluated through a comprehensive written examination at the end of the course. A certificate of completion will be issued to each attendee who has scored a minimum of 70% on the examination .

Upon successful completion of this OSHA accepted 8-hour HAZWOPER course, you will receive your University of South Florida OSHA Training Institute Education Center Program Certificate.

Additional Resources, Training and Assistance Available at

USF SafetyFlorida Consultation Program www.usfsafetyflorida.com 1-866-273-1105

USF SafetyFlorida provides free safety consultation statewide to Florida's small businesses. Companies can request a safety and health consultation at www.safetyflorida.usf.edu or by calling (866) 273-1105. During the consultation visit by USF SafetyFlorida, your company can earn our Sunshine State Safety Award if managers and employees demonstrate a commitment to continuous improvement of the effectiveness of the company's workplace safety and health management system. In addition, we can help your company qualify for the OSHA Safety and Health Achievement Recognition Award (SHARP). With SHARP, your company can become exempt from OSHA enforcement inspections if you operate an exemplary safety and health management system. To reward such employers, OSHA allows those who meet eligibility requirements to become exempt from OSHA inspections for a period of up to two years and then receive renewal exemptions for up to three additional years. For details on SHARP, call (866) 273-1105

USF Sunshine Education and Research Center <http://health.usf.edu/publichealth/erc/index.htm> 1-813-974-0989

Education and Research Centers are funded by the National Institute for Occupational Safety and Health (NIOSH). The purpose of the Sunshine Education and Research Center is to promote graduate training and research related to occupational health and safety.

The Sunshine Education and Research Center is dedicated to training professionals on how to treat and prevent occupational illnesses, why illness occur in the workplace, and how to make the workplace a safer environment. An Interdisciplinary approach is taken when training these graduate students. Occupational health core courses are taken by Occupational Medicine, Occupational Health Nursing, Occupational Safety, and Industrial Hygiene students. These students work on research and class projects together and have a study room in which they can discuss their educational coursework. The distinguishing features of the University of South Florida Sunshine ERC are:

1. Integrated research programs emphasizing NIOSH's National Occupational Research Agenda (NORA);
2. Interdisciplinary activities among a diverse group of professionals with different educational backgrounds and interests;
3. The use of innovative technology, such as distance learning;
4. Committed programs devoted to addressing the underrepresentation of minorities in the area of occupational health and safety;
5. Well-established plans to address the crucial state and regional occupational health and safety needs and professional resource deficiencies;
6. Very strong institutional support; and
7. Qualified, senior faculty to direct the programs.

COURSE SCHEDULE BY STATE/CITY

ALAMABA

Begin Date	End Date	Course Number
------------	----------	---------------

MOBILE

Dec 05	Dec 08	5400
--------	--------	------

FLORIDA

CLEARWATER

Feb 07	Feb 10	510
Mar 07	Mar 10	500
Mar 28	Mar 31	511
Apr 26	Apr 29	501

COCONUT GROVE

Jan 10	Jan 13	2225
Jan 24	Jan 27	511
Jan 31	Feb 03	501
Feb 21	Feb 23	3010
Mar 14	Mar 17	2045
Apr 04	Apr 07	521
May 23	May 24	7505
May 25		7205
May 26		7300
May 27		7500
May 30	Jun 02	2015
Jul 25	Jul 28	3095
Aug 22		5602

DAYTONA BEACH

Feb 16	Feb 18	502
Apr 04	Apr 07	510
Apr 11	Apr 14	511
Jul 18	Jul 20	503
Jul 25	Jul 28	511
Aug 01	Aug 04	501
Sep 26		7845
Sep 26		7510

FLORIDA

Begin Date	End Date	Course Number
------------	----------	---------------

DAYTONA BEACH

Sep 27		7500
Sep 28	Sep 29	7505
Sep 30	Nov 03	7105
Oct 03	Oct 06	500
Oct 31	Nov 02	502

FORT LAUDERDALE

Feb 16	Feb 18	503
Feb 22	Feb 24	501
May 16	May 19	500
Jun 13	Jun 14	7415
Jun 15		7400
Jun 16		7500
Jun 17		7105
Oct 24	Oct 27	510
Oct 31	Nov 03	500
Nov 14	Nov 17	511
Dec 12	Dec 15	501

FORT MYERS

Apr 04	Apr 06	503
Jun 20	Jun 23	5600
Aug 24	Aug 26	2264
Oct 04	Oct 07	511
Nov 01	Nov 04	510
Nov 07	Nov 09	502

JACKSONVILLE

Jan 03	Jan 07	521
Jan 10	Jan 14	500
May 02	May 05	502
Jun 13	Jun 17	510
Jun 20	Jun 23	503

FLORIDA

Begin Date	End Date	Course Number
------------	----------	---------------

JACKSONVILLE

Aug 15	Aug 19	500
Aug 29	Sep 01	5400
Sep 26	Sep 29	2225
Oct 11	Oct 14	511
Nov 07	Nov 10	501
Dec 12	Dec 15	5600
Dec 12		7405
Dec 13		7300
Dec 14		7205
Dec 15	Dec 16	7505

KEY WEST

Feb 15	Feb 18	511
Feb 28	Mar 03	501

MIAMI

Jan 24	Jan 26	3010
Feb 14	Feb 17	510
Mar 14	Mar 17	501
Apr 04	Apr 07	500
Apr 11	Apr 14	510
Apr 25	Apr 27	502
May 10	May 12	503
Jun 20	Jun 23	500
Jun 27	Jun 30	511
Jul 11	Jul 14	5400
Jul 11	Jul 14	510
Jul 11	Jul 14	2225
Jul 15		7845
Jul 18	Jul 21	501
Aug 01	Aug 04	6000
Aug 02	Aug 04	502

COURSE SCHEDULE BY STATE/CITY

FLORIDA

Begin Date	End Date	Course Number
------------	----------	---------------

MIAMI

Aug 08	Aug 11	500
Aug 29	Sep 01	510
Oct 11	Oct 13	503
Oct 11	Oct 14	501
Nov 30	Dec 02	500

NAPLES

Jan 24	Jan 26	502
Mar 01	Mar 04	511
Mar 15	Mar 18	510
May 16	May 19	501

ORLANDO

Jan 10	Jan 12	502
Jan 18	Jan 21	510
Jan 31	Feb 03	500
Jan 31	Feb 03	6000
Feb 11	Fall Protection Qualified Person	
Feb 14	Feb 17	511
Feb 28	Mar 03	501
Mar 09	Mar 11	503
Mar 18		7845
Mar 21		7400
Mar 22	Mar 23	7415
Mar 24	Mar 25	7505
Apr 11	Apr 13	2250
Apr 18	Apr 19	7505
Apr 20		7205
Apr 21		7300
Apr 22		7500
May 09	May 12	2225
May 16	May 19	5400
May 23	May 26	510

FLORIDA

Begin Date	End Date	Course Number
------------	----------	---------------

ORLANDO

Jun 06	Jun 09	500
Jun 07	Jun 09	502
Jun 14	Jun 16	2264
Jul 05	Jul 08	3095
Jul 25	Jul 27	3010
Aug 15	Aug 17	3110
Aug 15	Aug 18	511
Aug 29	Sep 01	5600
Sep 12	Sep 15	501
Sep 19	Sep 22	500
Sep 20	Sep 22	503
Sep 26	Sep 28	502
Oct 11	Oct 14	521
Oct 11		7200
Oct 12		7500
Oct 13		7510
Oct 14		7100
Nov 07	Nov 10	2045
Nov 14	Nov 17	510
Nov 18		7845
Nov 28	Dec 01	511
Dec 05	Dec 07	503
Dec 05	Dec 08	500
Dec 12	Dec 14	502

SUMTERVILLE

Oct 03	Oct 06	3095
--------	--------	------

TAMPA

Jan 10	Jan 13	5400
Jan 19	Jan 21	503
Jan 24	Jan 27	501

FLORIDA

Begin Date	End Date	Course Number
------------	----------	---------------

TAMPA

Feb 07	Feb 09	3110
Feb 14	Feb 17	500
Feb 22	Feb 25	3095
Mar 07	Mar 10	510
Mar 29	Mar 31	502
Apr 18	Apr 21	500
May 16	May 19	510
Jun 27	Jun 30	2045
Jul 08	Scaffolding Qualified Person	
Aug 08	Aug 11	521
Aug 29		7845
Aug 29		7510
Aug 30		7205
Aug 31		7300
Sep 01		7405
Sep 02		7410
Sep 19	Sep 22	511
Sep 26	Sep 28	3010
Oct 03	Oct 06	501
Oct 17	Oct 20	500
Oct 31	Nov 02	503
Nov 07	Nov 09	3110
Dec 05	Dec 08	510
Dec 12	Dec 14	2250

WESLEY CHAPEL

Jan 18	Jan 21	511
Jan 24	Jan 25	7415
Jan 31	Feb 04	40 Hour Hazwoper
Feb 07		7845

COURSE SCHEDULE BY STATE/CITY

FLORIDA

Begin Date	End Date	Course Number
WESLEY CHAPEL		
Feb 07		7510
Feb 08		7000
Feb 09		7200
Feb 10		7205
Feb 11		7500
Feb 15	Feb 18	5600
Feb 22	Feb 25	521
Mar 01	Mar 03	24 Hour Hazwoper
Mar 07	Mar 10	Hurricane Planning
Mar 11	8 Hour Hazwoper	
Mar 14	Mar 17	501
Mar 21	Mar 24	2225
Apr 11		5602
Apr 12	Apr 15	Hurricane Planning
Apr 18	Apr 22	40 Hour Hazwoper
Apr 25	Apr 27	510
May 02	May 04	2264
May 09	May 11	3010
May 16	May 19	511
May 20		7845
May 23	May 25	503
Jun 01	Jun 03	24 Hour Hazwoper
Jun 06	Jun 07	7120
Jun 10	Fall Protection Qualified Person	

FLORIDA

Begin Date	End Date	Course Number
WESLEY CHAPEL		
Jun 20	Jun 23	501
Jun 20	Jun 23	6000
Jun 27	Jun 30	2015
Jul 07		9001
Jul 15	8 Hour Hazwoper	
Jul 18	Jul 21	500
Jul 18	Jul 21	511
Jul 25	Jul 27	502
Jul 28	Jul 29	7120
Aug 08	Aug 11	510
Aug 15	Aug 18	501
Aug 22	Aug 26	40 Hour Hazwoper
Sep 06	Sep 09	500
Sep 12	Sep 15	510
Sep 19	Sep 21	24 Hour Hazwoper
Oct 11	Oct 13	2264
Oct 12	Oct 13	7415
Oct 17	Oct 19	502
Oct 24	Oct 27	6000
Oct 28	8 Hour Hazwoper	
Nov 01	Nov 03	24 Hour Hazwoper
Nov 07	Nov 10	511
Nov 14	Nov 17	501
Nov 14	Nov 17	2225
Dec 05	Dec 08	3095

FLORIDA

Begin Date	End Date	Course Number
WEST PALM BEACH		
Jan 03	Jan 06	511
Feb 15	Feb 18	6000
Feb 23	Feb 25	2264
Mar 28	Mar 31	40 Hour Hazwoper
Apr 18	Apr 21	5600
May 09	May 12	501
Aug 22	Aug 24	502

GEORGIA

SAVANNAH		
Feb 07	Feb 10	2015
Jun 13	Jun 16	5400

MISSISSIPPI

GULFPORT		
Feb 28	Mar 03	5400
May 09	May 12	510

NORTH CAROLINA

BEAUFORT		
May 02	May 05	5400

SOUTH CAROLINA

CHARLESTON		
Oct 17	Oct 20	5400
COLUMBIA		
Jun 06	Jun 09	510
Aug 01	Aug 04	500
Sep 12	Sep 15	511
Sep 26	Sep 29	501



University of South Florida
Continuing Professional Development
12901 Bruce B Downs Blvd.

UNIVERSITY OF
SOUTH FLORIDA
HEALTH SCIENCES CENTER

MDC 46
Tampa, FL 33612

Non-Profit Org.
U.S. Postage
PAID
Permit No. 1632
Tampa, FL

PLEASE SHARE THIS BROCHURE WITH YOUR COLLEAGUES

“Serving the Southeast Through Workplace Safety and Health Education”

www.usfotcenter.org

1-866-697-0975

For more information please visit our website.